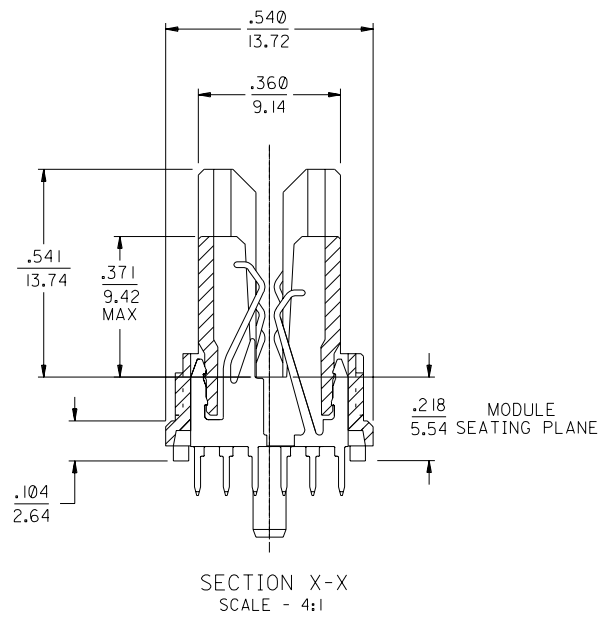
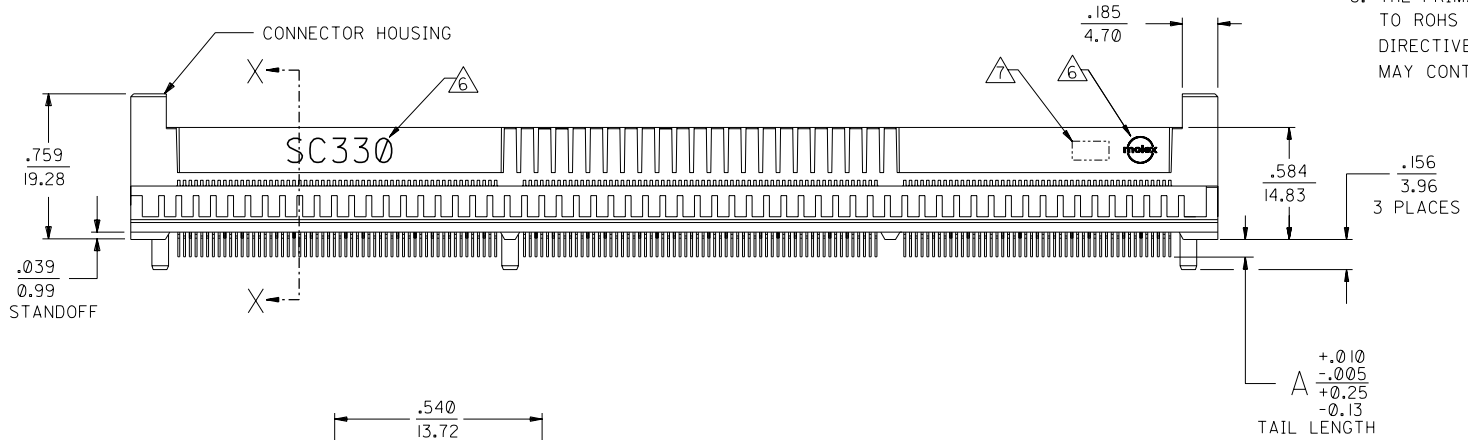
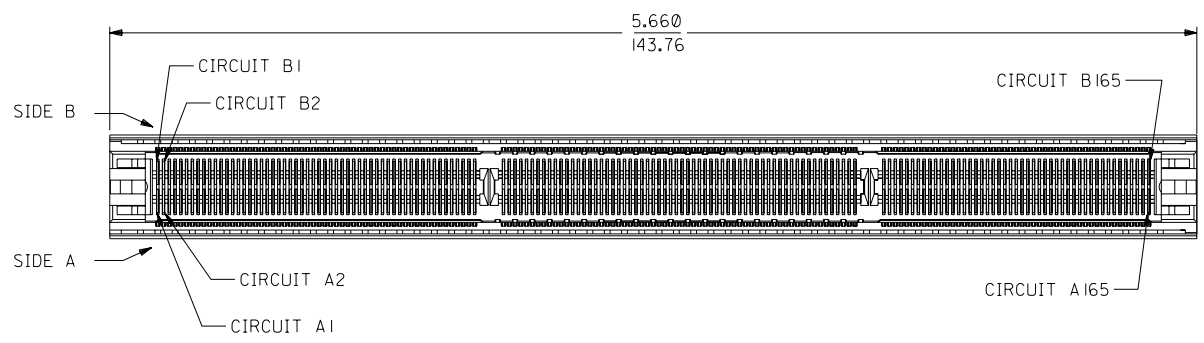


NOTES:

- MATERIALS:
HOUSING - LCP, 30% GLASS FILLED, 94-V0, BLACK.
TERMINALS - PHOSPHOR BRONZE.
- FINISH:
TERMINALS - .000030/0.00076 MINIMUM GOLD IN THE CONTACT AREA AND .000075/0.0019 MINIMUM TIN IN SOLDER TAIL AREA OVER .000050/0.0013 MINIMUM NICKEL OVERALL.
- PRODUCT SPECIFICATION PS-71109-9990 APPLIES.
- CARD SLOT ACCEPTS .062 +.007/-.005 P.C. BOARD.
- THE RECOMMENDED PLATING SPECIFICATION FOR THE MATING PC BOARD IS .000030/0.0076 MINIMUM GOLD OVER .000075/0.0019 MINIMUM NICKEL.
- "SC330" AND MOLEX LOGO SHALL APPEAR ON BOTH SIDES OF HOUSING, AND LOCATED APPROXIMATELY AS SHOWN.
- FOUR DIGIT DATE CODE (YR/WK) SHALL BE LOCATED APPROXIMATELY AS SHOWN.
- THE PRIMARY SHIPPING CARTON WILL BE LABELED "COMPLIANT TO ROHS DIRECTIVE 2002/95/EC AND ELV ANNEX II OF DIRECTIVE 2000/53/EC". CARTONS WITHOUT THIS LABEL MAY CONTAIN PRODUCT WITH LEAD.



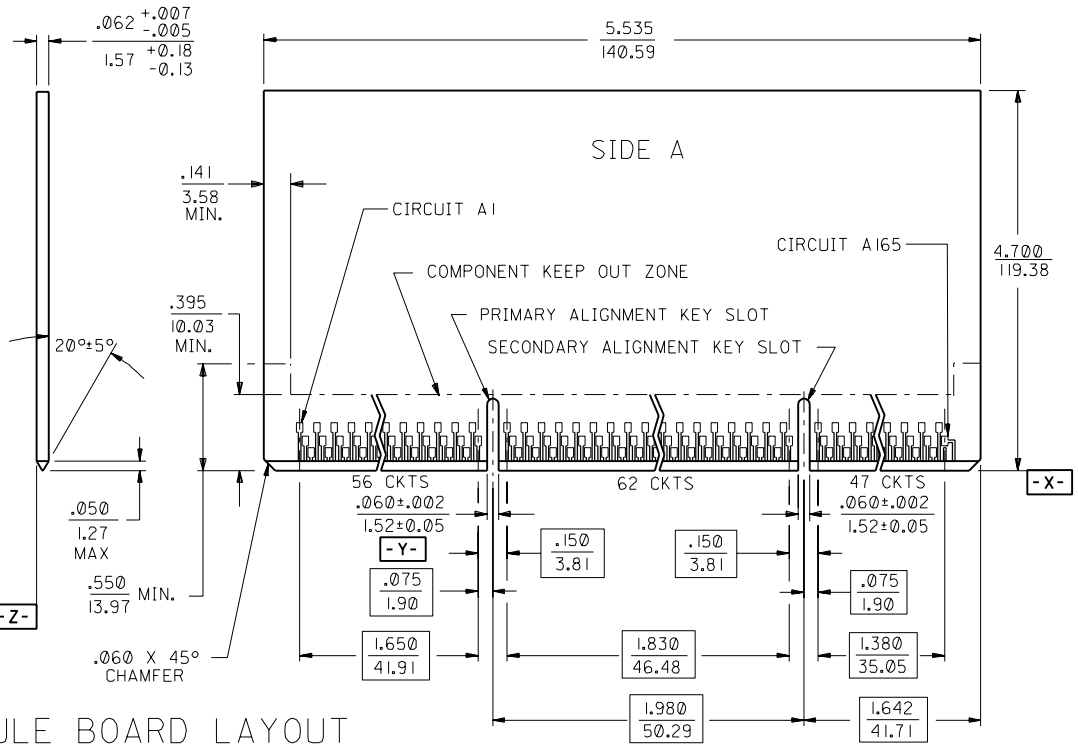
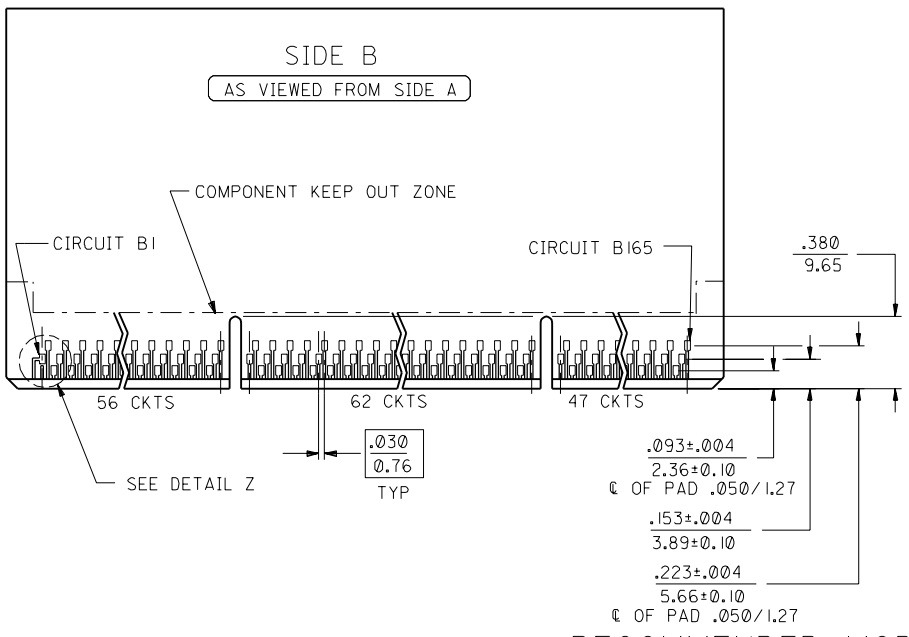
71109-2007	.140/3.56
71109-2006	.115/2.92
71109-2005	.090/2.29

MAT'L NUMBER A

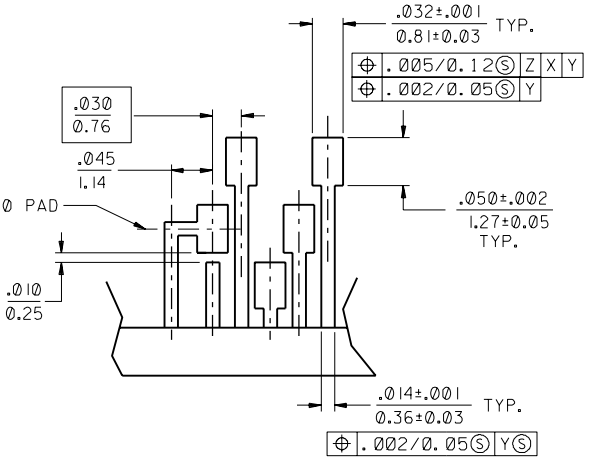
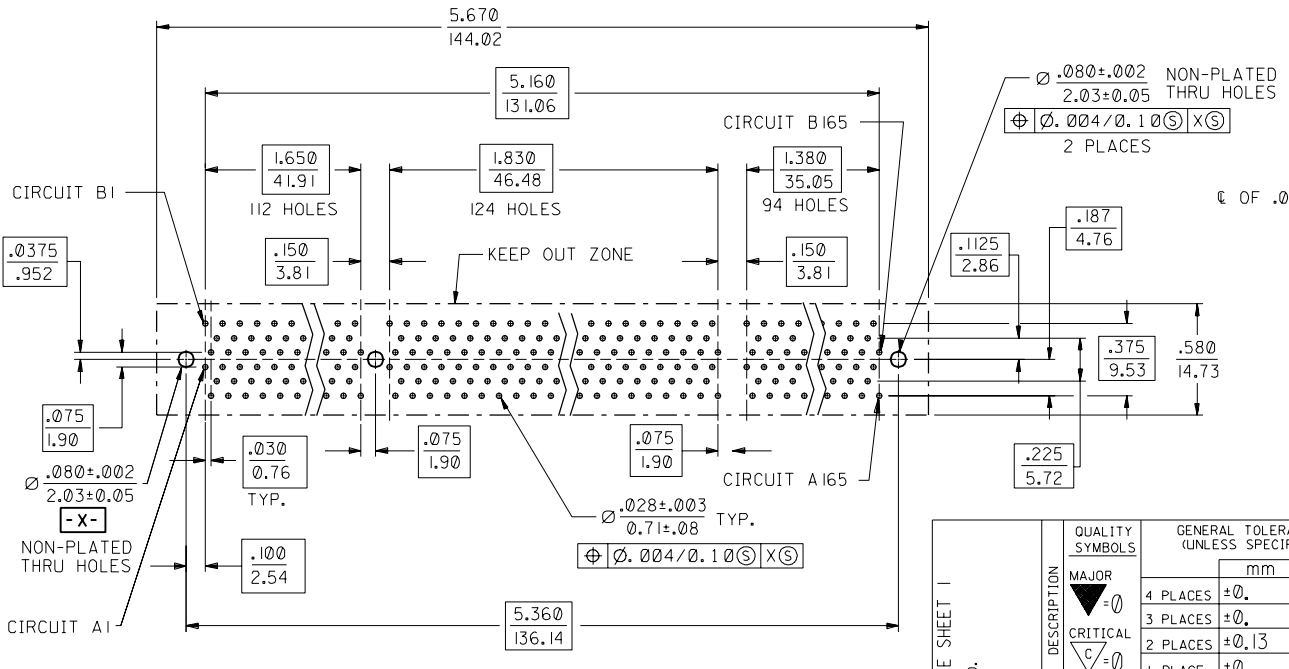
PLATING CHANGE	EC NO. UCP2004-2347
DRWNR: WHITE	04/05/21
CHK: BBARKER	04/05/21
APPR: SMILLER	04/05/21
REV	H

QUALITY SYMBOLS	GENERAL TOLERANCES: (UNLESS SPECIFIED)	SCALE 2 : 1	DESIGN UNITS <input type="checkbox"/> mm <input checked="" type="checkbox"/> INCH
MAJOR $\nabla=0$	mm INCH	DRAWN BY & DATE	NELSON 06/20/97
CRITICAL $\nabla/C=0$	4 PLACES $\pm 0.$ $\pm .$	CHECKED BY & DATE	NELSON 06/20/97
	3 PLACES $\pm 0.$ $\pm .005$	APPROVED BY & DATE	FUNCK 06/20/97
	2 PLACES ± 0.13 $\pm .$	CAD FILENAME	S7110966.S01
	1 PLACE $\pm 0.$ $\pm .$	MATERIAL NO.	SEE TABLE
	ANGULAR: $\pm 1^\circ$	DRAWING NO.	SD-71109-203
	DRAFT WHERE APPLICABLE MUST REMAIN WITHIN DIMENSIONS	SHEET NO.	1 OF 2

DIMENSIONS: <input type="checkbox"/> mm <input checked="" type="checkbox"/> INCH <input type="checkbox"/> mm ONLY		THIRD ANGLE PROJECTION	
TITLE: SALES ASSEMBLY SC330 "HiSpec" CONNECTOR W/PLASTIC PEGS			
MOLEX INCORPORATED			
MATERIAL NO. SEE TABLE		DRAWING NO. SD-71109-203	
SHEET NO. 1 OF 2		SIZE C	



RECOMMENDED MODULE BOARD LAYOUT



DETAIL Z
SCALE 10:1

RECOMMENDED PCB HOLE LAYOUT

SEE SHEET 1	QUALITY SYMBOLS MAJOR $\nabla = 0$ CRITICAL $\nabla = 0$	GENERAL TOLERANCES: (UNLESS SPECIFIED)		SCALE 2:1	DESIGN UNITS <input type="checkbox"/> mm <input checked="" type="checkbox"/> INCH	THIRD ANGLE PROJECTION <input type="checkbox"/> mm <input checked="" type="checkbox"/> INCH	DIMENSIONS:		SHT	REV	
		mm	INCH	mm	INCH		mm	INCH	mm	INCH	REVISE ON CAD ONLY
EC NO.	DESCRIPTION	4 PLACES	$\pm 0.$	$\pm .$	DRAWN BY & DATE NELSON 06/20/97	TITLE: SALES ASSEMBLY SC330 "HiSpec" CONNECTOR W/PLASTIC PEGS					
DRWN:		3 PLACES	$\pm 0.$	$\pm .005$	CHECKED BY & DATE NELSON 06/20/97	MATERIAL NO. SEE TABLE					
CHK:		2 PLACES	± 0.13	$\pm .$	APPROVED BY & DATE FUNCK 06/20/97	DRAWING NO. SD-71109-203					
APPR:		1 PLACE	$\pm 0.$	$\pm .$	CAD FILENAME S7110966.S02	SHEET NO. 2					
REV		ANGULAR: $\pm 1^\circ$			MATERIAL NO. SEE TABLE		DRAWING NO. SD-71109-203		SIZE C		
DRAFT WHERE APPLICABLE MUST REMAIN WITHIN DIMENSIONS						THIS DRAWING CONTAINS INFORMATION THAT IS PROPRIETARY TO MOLEX INCORPORATED AND SHOULD NOT BE USED WITHOUT WRITTEN PERMISSION.					